



SINGLE PHASE GLASS PASSIVATED BRIDGE RECTIFIERS

2KBP005M THRU 2KBP10M

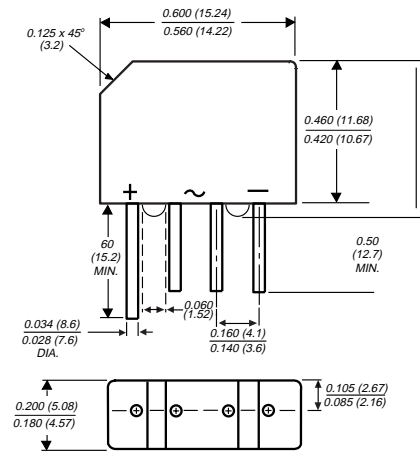
FEATURES

- Plastic package has Underwriters Laboratory Flammability Classification 94 V-0
- This series is UL listed under the Recognized Component Index, file number E54214
- Glass passivated chip junctions
- Typical I_R = less than $0.1\mu A$
- High case dielectric strength
- Ideal for printed circuit boards
- High temperature soldering guaranteed:
260°C / 10 seconds at 5 lbs. (2.3kg) tension

MECHANICAL DATA

- Case: Molded plastic body over passivated junctions
- Terminals: Plated leads solderable per MIL-STD-750 method 2026
- Mounting position: Any
- Weight: 0.06 ounce, 1.7gram

Case Style KBPM



Dimensions in inches and (millimeters)

MAXIMUM RATINGS AND ELECTRICAL CHARACTERISTICS

- Ratings at 25°C ambient temperature unless otherwise specified

	SYMBOLS	2KBP 005M	2KBP 01M	2KBP 02M	2KBP 04M	2KBP 06M	2KBP 08M	2KBP 10M	UNIT
Maximum Repetitive Peak Reverse Voltage	V_{RRM}	50	100	200	400	600	800	1000	Volts
Maximum RMS Voltage	V_{RMS}	35	70	140	280	420	560	700	Volts
Maximum DC Blocking Voltage	V_{DC}	50	100	200	400	600	800	1000	Volts
Maximum Average Forward Output Rectified Current $T_A = 50^\circ C$	$I_{(AV)}$	2.0							Amps
Peak Forward Surge Current 8.3ms single half sine - wave superimposed on rated load (JEDEC method) $T_J - 150^\circ C$	I_{FSM}	60							Amps
Rating for fusing (t < 8.3ms)	I^2t	15.0							A^2sec
Maximum Instantaneous Forward Voltage drop per leg at 3.14A	V_F	1.1							Volts
Maximum DC Reverse Current at rate DC blocking voltage per leg	$T_A = 25^\circ C$	5.0							μA
	$T_A = 125^\circ C$	500.0							
Typical Junction Capacitance per leg (Note 1)	C_J	25							pF
Typical Thermal Resistance per leg (Note 2)	$R_{\theta JA}$	30							$^\circ C/W$
	$R_{\theta JL}$	11							
Operating and Storage Temperature Range	T_J, T_{STG}	(-55 TO +165)							$^\circ C$

NOTES:

1. Measured at 1.0 MHz and applied reverse voltage of 4.0 Volts
2. Thermal resistance from junction to ambient and from junction to lead mounted on P.C.B. with 0.47*0.47(12*12mm) copper pads
 - JEDEC registered values.

RATINGS AND CHARACTERISTICS CURVES 2KBP005M THRU 2KBP10M

FIG. 1 - DERATING CURVE OUTPUT RECTIFIED CURRENT

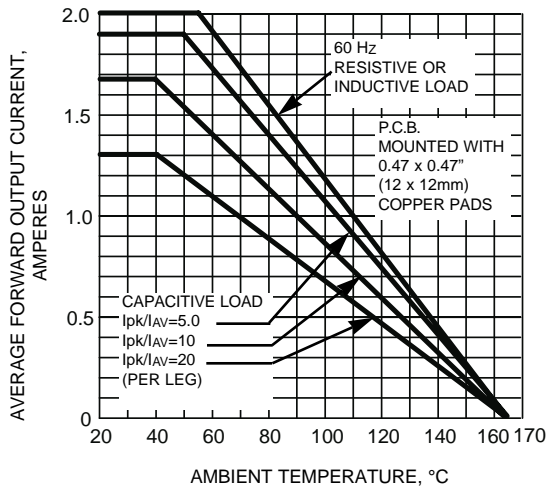


FIG. 2 - MAXIMUM NON-REPETITIVE PEAK FORWARD SURGE CURRENT PER LEG

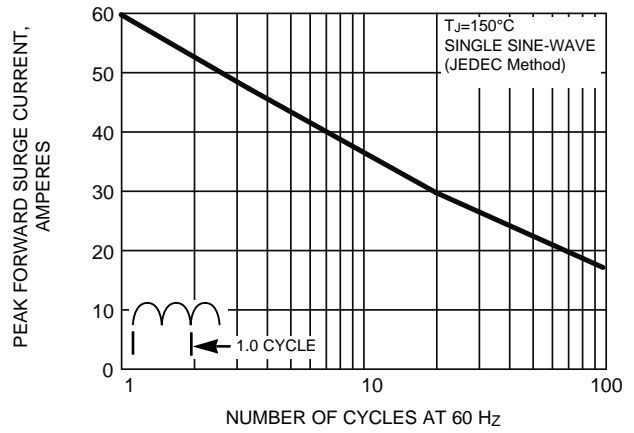


FIG. 3 - TYPICAL FORWARD CHARACTERISTICS PER LEG

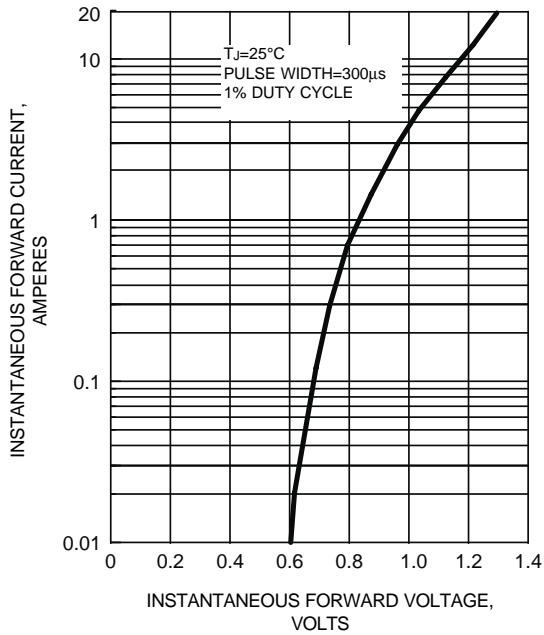


FIG. 4 - TYPICAL REVERSE LEAKAGE CHARACTERISTICS PER LEG

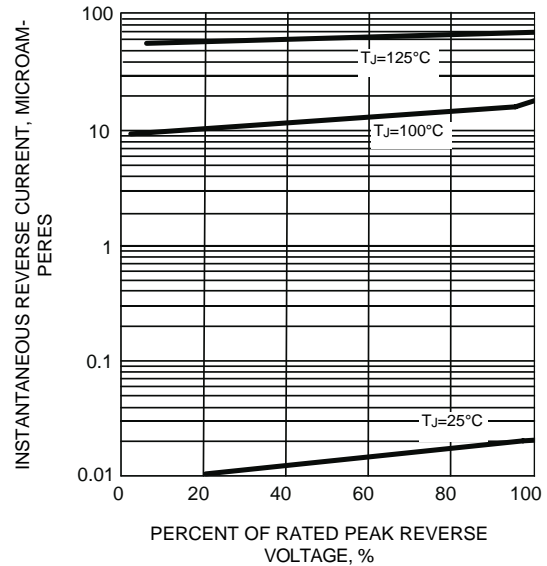


FIG. 5 - TYPICAL JUNCTION CAPACITANCE PER LEG

